

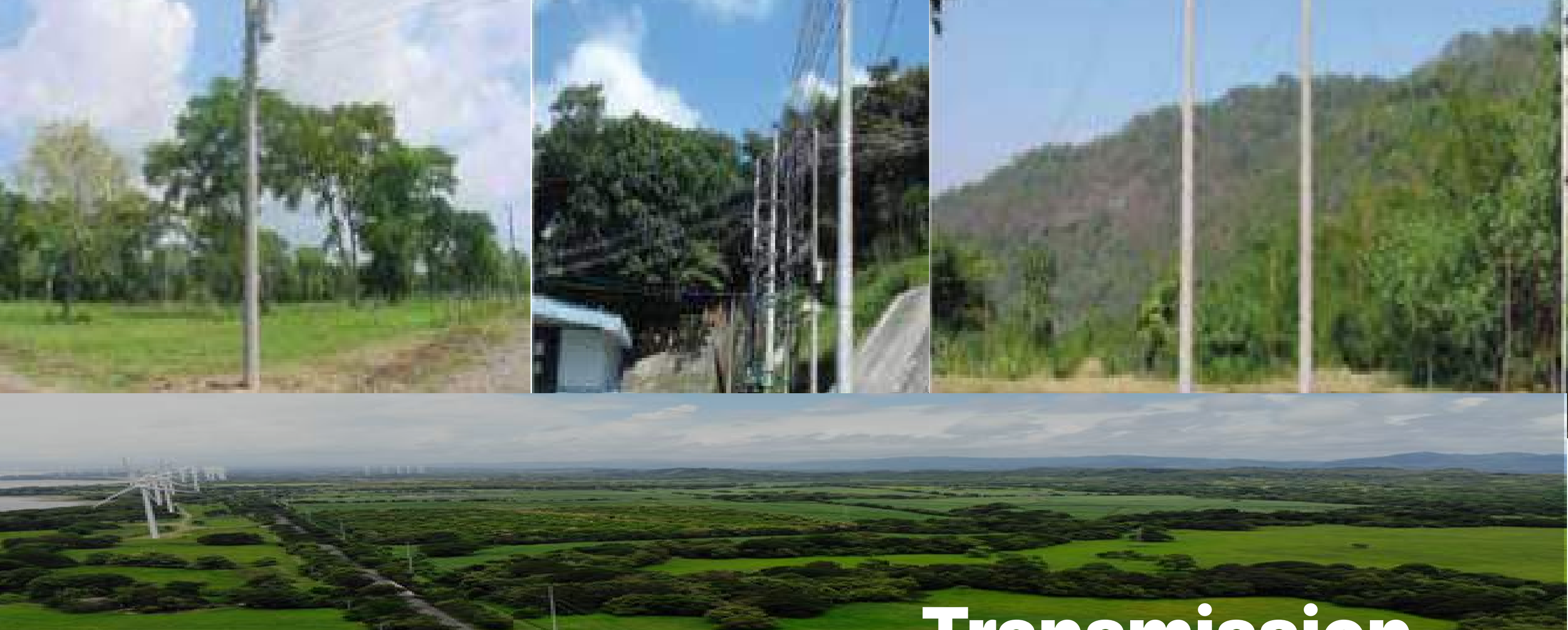
# Distribution



Atlas, a third generation family owned company, has been in the business of manufacturing and distributing spun concrete poles, supplying markets ranging from North America to South America, since 1958

Atlas not only manufactures spun concrete poles with all of its technical requirement but also provides:

- Pre-engineered designs
- Integrated supply chain (S&OP) processes assuring constant supply as well as reduction in lead times
- Custom designs
- Maintenance free poles
- Life time warranty
- Certifications:
  - ISO 9001-2015
  - ASTM (e.g.: A416, C33, C39)
  - IEEE NESC
  - Mexico CFE
  - PCI Committee Report



# Transmission



These transmission poles of electric power are used to support low, medium and high voltage power lines. They can be of the bolted or flange type and are specifically designed according to the loads and requirements of the case, complying with international standards.

Atlas structures can be designed according to the following ranges:

Note: height and ultimate tip load will depend on each specific designs and technical aspects.



# Telecom

Atlas also specializes in the specific design and manufacturing of spun concrete poles used for Telecommunication structures which require specialized wind resistance and limited mobility or any other Telecommunication requirement based on system/customer specifications.



# Lighting

Specializes in the specific design and manufacturing of spun concrete poles used with lighting fixtures for industrial, public and sporting venues.



# Engineering

As part of our added values, our company offers specialized technical support to our spun concrete poles design and manufacturing process. Our services range from optimal design structures for distribution lines, transmission lines, or designing and determining optimal support structures for telecommunications and lighting applications.

We understand the importance to our customers to have a successful project and the optimization of every aspect involved in the process, therefore we have put together an engineering team in order to provide close hand support in the development of each project, taking into count specific needs to fully optimize resources.

We carefully supervise the processes that impact the design and quality of our products taking into count every technical requirement for each customer; we support our processes and designs with tools and specialized design programs that ensure the proper functioning of each design.

In order to comply with our strict quality controls, we have one of the most advanced facilities in the region. Atlas makes use of state-of-the-art technology equipment to perform Distribution and Transmission resistance tests, both in prototype tests as well as periodic samples from our production line. These procedures allow us to ensure our quality as well as the optimal usage of our products.



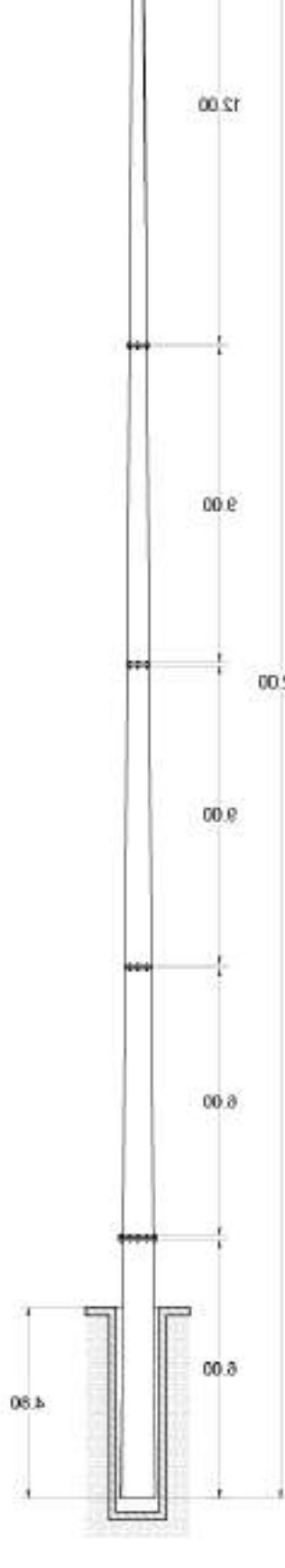
### General Project Analysis

In collaboration with our client we evaluate the approved technical specifications and designs in order to determine the overall requirements for the best suitable design.

### Technical determination of spun concrete poles

Once all technical specifications and designs are reviewed, the Engineering Team proceeds to provide:

- Structural and engineering design
- Technical specifications



- Durability**
- Minimal vibration, deflection and distortion including twisting
  - No fatigue joints
  - Withstands high ice loading with no rusting or deterioration from the elements
  - Resistant to fire, woodpeckers, termites, insects and rot
  - Highly resistant to road and de-icing salts, airborne acidities and acidic soils

## POLE SPECIFICATIONS

ATLAS SPUN CONCRETE POLES									Pole sections		
Pole Length (ft)	Above Grade Height	Embedment Depth	Tip Diameter (in)	Bottom Diameter (in)	Nominal Weight (lb)	Concrete Pole Class	Transverse Load (lb)	Description	Length (ft)	Weight (lb)	
29.5	24.5	5	6.5	11.8	1700	C	1200	-	-	-	
29.5	24.5	5	6.5	11.8	1750	D	1500	-	-	-	
29.5	24.5	5	6.5	11.8	1750	E	2000	-	-	-	
29.5	24.5	5	6.5	11.8	1750	F	2400	-	-	-	
35.1	29.6	5.5	6.5	12.8	2250	C	1000	-	-	-	
35.1	29.6	5.5	6.5	12.8	2250	D	1500	-	-	-	
35.1	29.6	5.5	6.5	12.8	2300	E	2000	-	-	-	
35.1	29.6	5.5	6.5	12.8	2300	F	2400	-	-	-	
39.4	33.5	5.9	6.5	13.6	2700	C	1346	-	-	-	
39.4	33.5	5.9	6.5	13.6	2700	D	1500	-	-	-	
39.4	33.5	5.9	6.5	13.6	2750	E	2000	-	-	-	
39.4	33.5	5.9	6.5	13.6	2750	F	2400	-	-	-	
44.9	38.4	6.5	6.5	14.6	3700	E	2000	Tip	19.7	1100	
44.9	38.4	6.5	6.5	14.6	3700	F	2400	Base	25.3	2600	
44.9	38.4	6.5	6.5	14.6	3700	F	2400	Tip	19.7	1100	
44.9	38.4	6.5	6.5	14.6	3700	F	2400	Base	25.3	2600	
49.2	42.3	6.9	6.5	15.4	4300	E	2000	Tip	29.5	1900	
49.2	42.3	6.9	6.5	15.4	4300	F	2400	Base	19.7	2400	
49.2	42.3	6.9	6.5	15.4	4300	F	2400	Tip	19.7	1100	
49.2	42.3	6.9	6.5	15.4	4300	F	2400	Base	29.5	3200	
49.2	42.3	6.9	8.3	17.1	5550	G	3300	Tip	19.7	1500	
49.2	42.3	6.9	8.3	17.1	5550	G	3300	Base	29.5	4050	
54.8	47.3	7.5	6.5	16.4	5200	E	2000	Tip	29.5	1850	
54.8	47.3	7.5	6.5	16.4	5200	E	2000	Base	25.5	3350	
54.8	47.3	7.5	8.3	18.1	6600	G	3000	Tip	29.5	2500	
54.8	47.3	7.5	8.3	18.1	6600	G	3000	Base	25.5	4100	
59.1	51.2	7.9	6.5	17.1	5900	F	2400	Tip	19.7	1100	
59.1	51.2	7.9	6.5	17.1	5900	F	2400	Base	39.4	4800	
59.1	51.2	7.9	8.3	18.9	7450	G	3000	Tip	29.5	2500	
59.1	51.2	7.9	8.3	18.9	7450	G	3000	Base	29.5	4950	
59.1	51.2	7.9	8.3	18.9	7550	H	4000	Tip	29.5	2550	
59.1	51.2	7.9	8.3	18.9	7550	H	4000	Base	29.5	5000	
68.9	60	8.9	6.5	18.9	7850	F	2400	Tip	29.5	1900	
68.9	60	8.9	6.5	18.9	7850	F	2400	Base	39.4	5950	
68.9	60	8.9	8.3	20.7	10000	G	3000	Tip	39.4	3850	
68.9	60	8.9	8.3	20.7	10000	G	3000	Base	29.5	6150	
68.9	60	8.9	8.3	20.7	9850	H	4000	Tip	29.5	2600	
68.9	60	8.9	8.3	20.7	9850	H	4000	Base	39.4	7250	
78.7	68.8	9.9	8.3	22.4	12800	G	3600	Tip	39.4	3900	
78.7	68.8	9.9	8.3	22.4	12800	G	3600	Base	39.4	8900	
78.7	68.8	9.9	8.3	22.4	12850	H	4000	Tip	39.4	3900	
78.7	68.8	9.9	8.3	22.4	12850	H	4000	Base	39.4	8950	
78.7	68.8	9.9	10	24.2	15550	J	5000	Tip	39.4	5000	
78.7	68.8	9.9	10	24.2	15550	J	5000	Base	39.4	10550	
78.7	68.8	9.9	11.8	26	18400	K	6000	Tip	39.4	6150	
78.7	68.8	9.9	11.8	26	18400	K	6000	Base	39.4	12250	
78.7	68.8	9.9	11.8	26	18500	L	7000	Tip	39.4	6200	
78.7	68.8	9.9	11.8	26	18500	L	7000	Base	39.4	12300	
88.6	77.7	10.9	8.3	24.2	16100	G	3000	Tip	29.5	2500	
88.6	77.7	10.9	8.3	24.2	16100	G	3000	Intermediate I	29.5	5100	
88.6	77.7	10.9	8.3	24.2	16100	G	3000	Base	29.5	8500	
88.6	77.7	10.9	8.3	24.2	16250	H	4000	Tip	29.5	2550	
88.6	77.7	10.9	8.3	24.2	16250	H	4000	Intermediate I	29.5	5200	
88.6	77.7	10.9	8.3	24.2	16250	H	4000	Base	29.5	8500	
88.6	77.7	10.9	10	26	19750	J	5000	Tip	29.5	3350	
88.6	77.7	10.9	10	26	19750	J	5000	Intermediate I	29.5	6450	
88.6	77.7	10.9	10	26	19750	J	5000	Base	29.5	9950	
88.6	77.7	10.9	11.8	26	23100	K	6000	Tip	29.5	4200	
88.6	77.7	10.9	11.8	26	23100	K	6000	Intermediate I	29.5	7600	
88.6	77.7	10.9	11.8	26	23100	K	6000	Base	29.5	11300	
88.6	77.7	10.9	11.8	27.8	23200	L	7000	Tip	29.5	4200	
88.6	77.7	10.9	11.8	27.8	23200	L	7000	Intermediate I	29.5	7650	
88.6	77.7	10.9	11.8	27.8	23200	L	7000	Base	29.5	11350	
88.6	77.7	10.9	11.8	27.8	23600	M	8000	Tip	29.5	4250	
88.6	77.7	10.9	11.8	27.8	23600	M	8000	Intermediate I	29.5	7850	
88.6	77.7	10.9	11.8	27.8	23600	M	8000	Base	29.5	11500	
88.6	77.7	10.9	13.6	29.5	26950	N	9000	Tip	29.5	5200	
88.6	77.7	10.9	13.6	29.5	26950	N	9000	Intermediate I	29.5	9100	
88.6	77.7	10.9	13.6	29.5	26950	N	9000	Base	29.5	12650	
88.6	77.7	10.9	13.6	29.5	27150	O	10000	Tip	29.5	5250	
88.6	77.7	10.9	13.6	29.5	27150	O	10000	Intermediate I	29.5	9200	
88.6	77.7	10.9	13.6	29.5	27150	O	10000	Base	29.5	12700	
98.4	86.6	11.8	11.8	29.5	27200	K	6000	Tip	39.4	6150	
98.4	86.6	11.8	11.8	29.5	27200	K	6000	Intermediate I	29.5	8900	
98.4	86.6	11.8	11.8	29.5	27200	K	6000	Base	29.5	12150	
98.4	86.6	11.8	11.8	29.5	27550	L	7000	Tip	39.4	6200	
98.4	86.6	11.8	11.8	29.5	27550	L	7000	Intermediate I	29.5	8900	
98.4	86.6	11.8	11.8	29.5	27550	L	7000	Base	29.5	12450	
98.4	86.6	11.8	13.6	29.5	32250	M	8000	Tip	39.4	7600	
98.4	86.6	11.8	13.6	29.5	32250	M	8000	Intermediate I	29.5	10450	
98.4	86.6	11.8	13.6	29.5	32250	M	8000	Base	29.5	14200	
108.3	95.5	12.8	11.8	31.3	32850	L	7000	Tip	39.4	6200	
108.3	95.5	12.8	11.8	31.3	32850	L	7000	Intermediate I	29.5	8950	
108.3	95.5	12.8	11.8	31.3	32850	L	7000	Base	39.4	17700	
108.3	95.5	12.8	13.6	33.1	38000	M	8000	Tip	39.4	7600	
108.3	95.5	12.8	13.6	33.1	38000	M	8000	Intermediate I	29.5	10500	
108.3	95.5	12.8	13.6	33.1	38000	M	8000	Base	39.4	19900	